

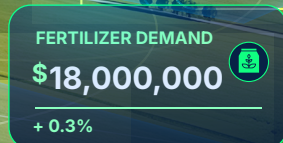
CORVIAN

How AI Is Turning Unanalyzed Agronomy Data into Sales Intelligence

Not all AI understands agriculture.

Here's how purpose-built AI turns agronomic data into revenue, efficiency, and execution at enterprise scale.

CORVIAN
AI AGENTS



Most AI wasn't built for agriculture, *and it shows.*

While AI adoption is accelerating across industries, ag retailers still struggle to turn field data into consistent, revenue-driving decisions. Over the past 20 years, agricultural digitization has shown that agronomy doesn't scale easily.

As retail networks grow, teams face the same constraints:

- Limited agronomist capacity
- Inconsistent execution across locations
- Missed revenue opportunities hidden in field data

Most AI tools don't solve this. They weren't built to understand crop plans, product recommendations, or field-level variability.

For AI to deliver value in ag, it has to be built on agronomic data, not generic datasets.

Corvian AI Agents are trained on over 100M acres of agricultural data and designed to address the real, evolving challenges of agronomy; scaling coverage, improving consistency, and turning field activity into revenue across retail networks.



<1% of global **AI investment** is focused on **agriculture,**

leaving most ag organizations trying to apply tools that weren't designed for their data, workflows, or decisions.

Proof Points: What This Looks Like in Practice



Zero Data Loss from the Field

Handwritten notes, recommendations, and observations are digitized and structured in real time, ensuring critical field intelligence is never lost.

- Captures institutional knowledge across teams
- Creates a consistent, searchable system of record



Acres Analyzed

Field-level data, including crop plans, weather, soil, and historical performance, is processed at scale to generate consistent, data-backed recommendations.

- Eliminates manual review of fragmented datasets
- Enables real-time agronomic insight across the network



Acres Prioritized

AI continuously analyzes field conditions, crop stage, and variability to rank acres by urgency, so agronomy teams focus first on the fields that drive the most impact.

- Reduces time spent on low-value acres
- Improves response time on at-risk or high-opportunity fields



Opportunities Identified

AI surfaces product and agronomic opportunities based on field conditions, timing, and historical patterns, turning data into clear, actionable recommendations.

- Increases revenue per acre through better timing and targeting
- Supports agronomists with data-backed selling opportunities



What This Means for **Your Business**



For Agronomy Leaders:

- Cover more acres without adding headcount
- Focus time on high-value recommendations
- Reduce manual workflows



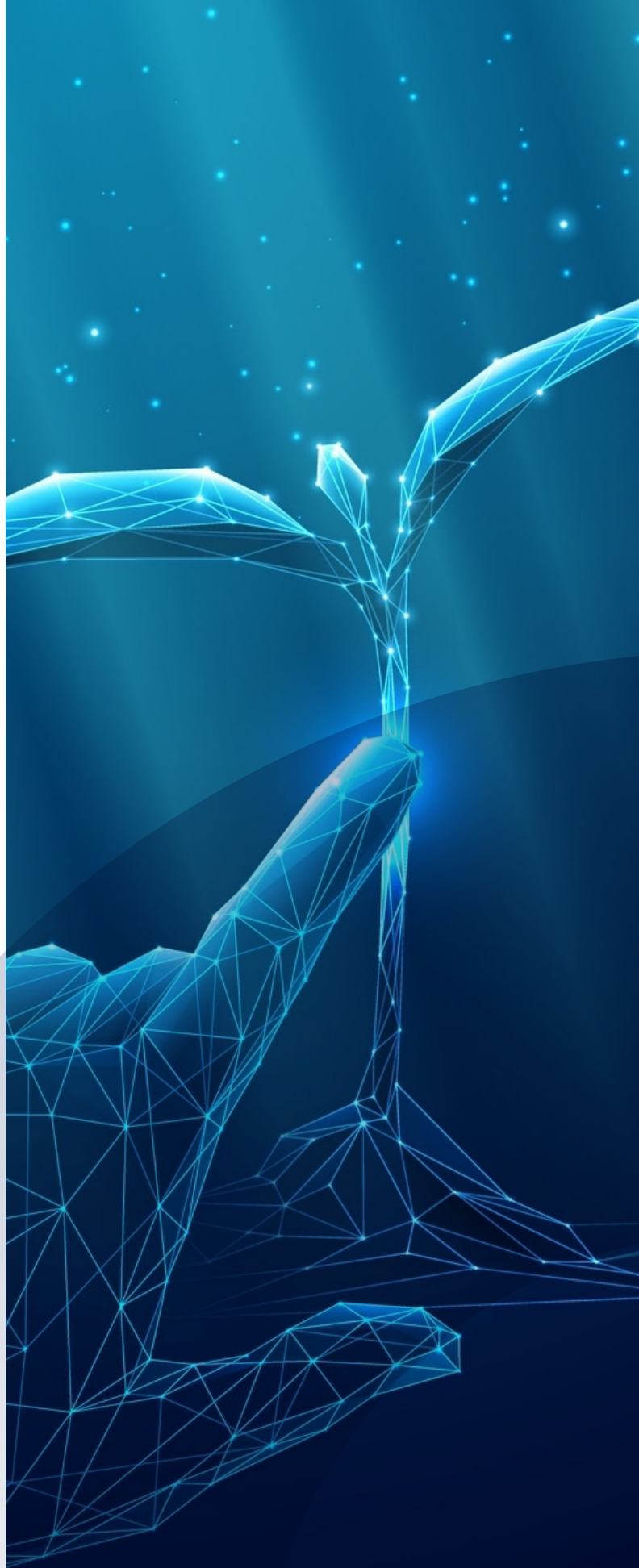
For Commercial & Sales Leaders:

- Clear visibility into product demand
- Increased revenue per acre
- Stronger alignment between field activity and sales



For Operations & Supply Chain:

- Early signals on demand shifts
- Better inventory positioning
- Reduced inefficiencies across regions



Why Most AI Falls Short in Agriculture

Most AI tools:

Are trained on generic datasets

Don't understand agronomic workflows

Can't interpret crop plans or recommendations

Operate outside of real field conditions



Built on 100M+ acres of agricultural data

Trained on real crop plans, recommendations, and field activity

Designed specifically for ag retail and enterprise operations

Connects field → agronomy → sales → supply chain

Agronomy scales with **people**.
Execution scales with the right **technology**.

Request a Preview of Corvian AI Agents.

Contact Us

Visit Our Website